

DSPL2 are offering half-termly consultation sessions with Dr Katy Cole, Educational Psychologist (EdPsych-Insight Ltd).

Consultations will take place over Zoom.

What are consultations?

Educational psychology consultations are 45-minute sessions that can be used for collaborative problem solving and support for:

- an individual child/young person – if there are concerns around progress in learning, social interactions, emotional presentation or any other area of Special Educational Needs. It is helpful to invite the parents and include the pupil in these consultations.
- a group/class – if there are concerns about group dynamics, how to plan for differing needs across a group, or explore interventions for a particular area of need
- an aspect of your role – if you want a space as a SENCo, senior leader or mental health lead to reflect on the emotional or work pressures of the role and explore next steps
- an area of need in the school – if you would like support for strategic planning around e.g., literacy provision, well-being, inclusion

The intended outcomes of participating in a consultation are to have more clarity and shared understanding of a situation, and ideas on next steps to take. A short record of the consultation will be provided as evidence of discussion and action.

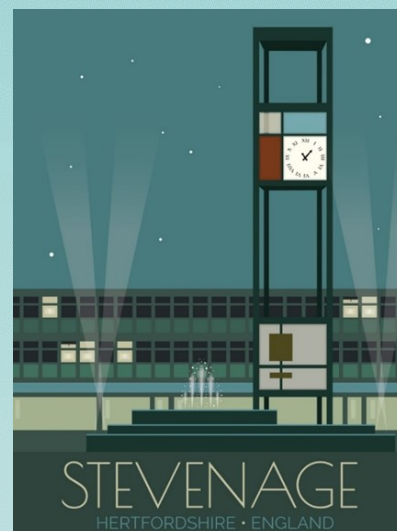
How do I book a consultation?

1. Complete this short [Google form](#) to choose a date/time. Submit.
2. DSPL2 will confirm with an email and consultation questionnaire.
3. Send the consultation questionnaire to EP **at least** two weeks before the date of the consultation. Send to EP by email, using a password protected document. *If you are unable to return the consultation questionnaire two weeks prior to the meeting, your appointment may be allocated to another school.*
4. Katy will send a Zoom link for the session date/time. Save the link and share it with anyone who is due to attend the consultation.
5. Join via Zoom at the time/date booked.

Educational Psychology Consultations

DSPL2

Delivering Special Provision Locally



EdPsych
Insight

DSPL2

Supporting children,
young people, families
and schools in Stevenage
and surrounding villages.

*Our
children,
our area*



[DSPL2 website](#)