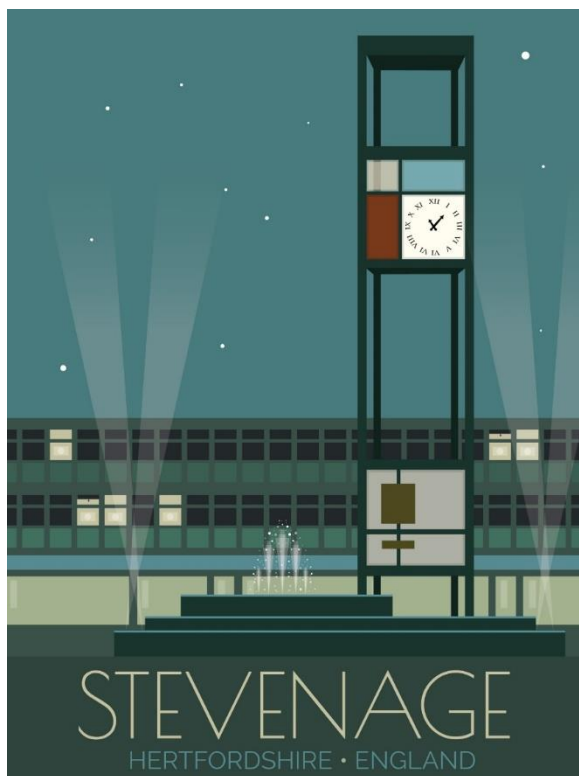




Delivering Special Provision Locally

Professionals
Newsletter
Autumn 2023



DSPL2

supporting children, young people,
families and schools in Stevenage
and surrounding villages.

***Our
children,
our area***



website: <https://www.stevenagedspl.org.uk/>

Contents

- County Priorities for DSPLs
- DSPL2 Current Priorities
- 6/7 Transition support
- VSEND
- EBSA support
- Data capture
- EHCCo meetings
- LHNF
- Pre Apprenticeship Programme

County priorities for DSPL's:



Supporting mainstream schools and settings with SEND pupils

Young people awaiting a special school place

Young people with social, emotional, mental health needs

Emotional based school avoidance

Young people out of school/EHE/Missing from education/exclusions

Young people on reduced/part time timetables

DSPL2 Current Priorities

SEMH

- To find additional ways to support children and young people with social, emotional and mental health needs.
- We are arranging showcase events with Lumi Nova and Sandbox to support school colleagues to make best use of both resources.

Transition

- To work in partnership with DSPL2 schools to identify the needs of children who may be vulnerable throughout 6/7 transition.



Speech, Language, Communication and Autism
Team (SLCA)

EBSA

- To work in partnership with MHST and other services to plan support for 11-16 year old young people who are struggling to attend school.
- To create a network of support in partnership with young people and their families.

6/7 Transition

New for 2024

1. A group of SENCO's are working on a DSPL2 wide format for SEND pupil passports. Secondary colleagues will be invited to join the planning session.
2. Transition team will be delivering parent support sessions hosted in cluster groups.
3. Referral form has been updated.
4. MHST will offer parent support sessions online again this year.



Delivering Special
Provision Locally



Greenside School
Learning Achieving Together



SESC
Stevenage Education
Support Centre



DSPL2 Transition Support 2024

The Aims:

- To work in partnership with DSPL2 schools to identify the needs of children who may be vulnerable throughout 6/7 transition.
- To work in partnership with DSPL2 professionals to provide the most meaningful support for our children.
- To provide transition support across summer and autumn term 2024.
- To evaluate and reshape DSPL2 transition offer for 2025.

The Process:

Autumn term 2023	Spring term 2024	Summer term 2024
Friday 22/09/2023 Transition Team meeting (1) Oak Suite <i>Lunch provided</i> <ul style="list-style-type: none"> ➤ Referred CYP Overview ➤ Secondary Support planning ➤ Evaluation data ➤ Review of referral criteria ➤ Programme Planning ➤ Sharing good practice Thursday 12/10/2023 3.30-4.30pm Meet the team event	Monday 08/01/2024 Referral forms sent to schools Friday 09/02/2024 Closing date for referrals	22/04/2024 Transition support begins <ol style="list-style-type: none"> 1. 22.04.24 2. 29.04.24 3. 06.05.24 No sessions wk beginning 13/05/2024 due to SATS <ol style="list-style-type: none"> 4. 20.05.24 5. 03.06.24 6. 10.06.24
Friday 08/12/2023 Transition Team Meeting (2) <ul style="list-style-type: none"> ➤ Review of secondary support ➤ Programme plans ➤ Finalise referral criteria 	Tuesday 05/03/2024 Transition Team Meeting (3) <ul style="list-style-type: none"> ➤ Triage and allocation of referrals Wk beginning 25/03/2024 DSPL2 Manager to contact schools with support update.	Wednesday 19/06/24 Transition Team Meeting (4) <ul style="list-style-type: none"> ➤ Review of support ➤ Evaluation of programmes/process ➤ Commitments for 2025

DSPL2 Support around Valuing SEND

Wednesday 7th February 2024

3.30-4.30pm (MS Teams)



Valuing SEND Refresher

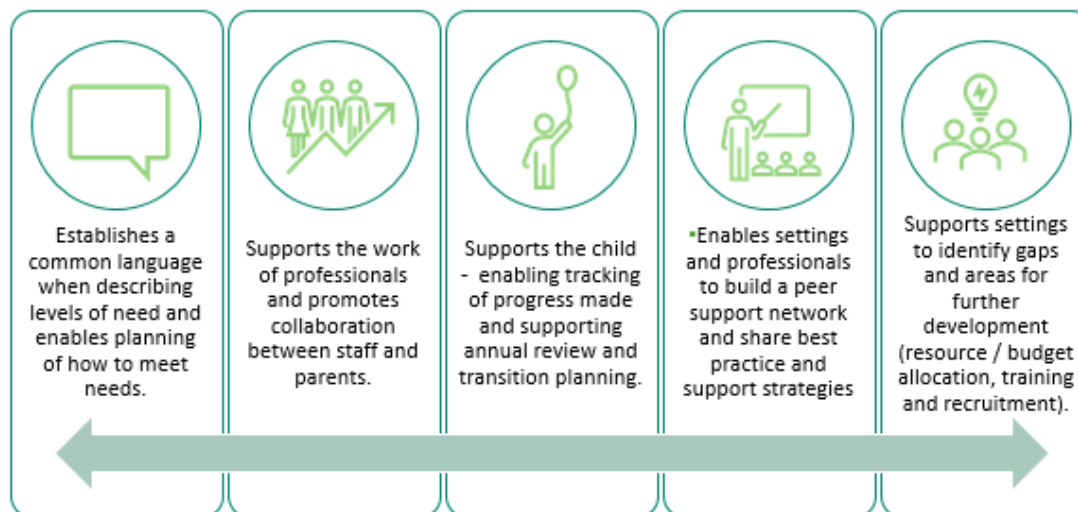
Next Steps in DSPL2:

- VSEND refresher training 7th February
- VSEND experts:

As a next step to support colleagues within DSPL2 schools to utilise VSEND, we are hoping to be able to offer peer support. We are planning to recruit VSEND experts; SENCo's who are making use of VSEND and could support other SENCo's to begin to use the tool.

If you are interested in being a part of the peer support, please get in touch.

Key benefits you can expect from using the VSEND tool and approach in practice:



What can you expect from the training:

- ✓ **Obtain a better understanding of** what the VSEND tool and approach is about
- ✓ **How to apply the VSEND tool and approach** in your settings.
- ✓ **How we will work together** on it and the support we will provide.



Book on the DSPL2 Eventbrite page

<https://www.eventbrite.co.uk/e/valuing-send-refresher-tickets-779283978357?aff=oddtcreator>

"VSEND allowed us to think about further provision I want to implement in my setting, and parents have suggested fantastic interventions."
Hertfordshire SENCo



"VSEND could help [our team] when they're identifying emerging needs, and the tool will be helpful when highlighting specific interventions."
Health colleague

DSPL2 support for Emotional based school avoidance

From January 2024 a DSPL2 Support worker will be supporting referred young people aged 11-16

DSPL2 support worker can provide direct support to young people, their families and school colleagues to:

- Reduce emotional based school avoidance.
- Support successful transitions.



Delivering Special
Provision Locally

Criteria for referral:



- Referrals will be accepted for young people from Secondary schools. Parents can also refer for support.
- The young person's attendance is affected significantly by emotional based school avoidance. *Attendance between 30%-90%*)
- The young person is finding it difficult to engage with education due to emotional based school avoidance.
- The young person has had multiple school moves recently.
- There are complex/multiple needs across the family including EBSA, with more than one child having a Special Education Need or Disability and the family needs support to understand the SEND of their young people to enable them to access services.

Referral form can be found on the DSPL2 Website

Summary of DSPL2 Support Worker Process



	Preparation for Support			Week 1	Weeks 2-8	Week 8	Weeks 8-16
School/ Parents/carers	Completed referral form			Meeting 1 held at school, lead by DSPL2 support worker. Support plan agreed by child/young person/parents /carers/school champion/ DSPL2 support worker.	<ul style="list-style-type: none"> •PASS established as baseline with child/young person. •Direct work takes place. •Week 4: Mid point review meeting (review and update support plan) •Week 8 revisit PASS. 	Final review meeting at school	Contact DSPL2 Support worker for support/ advice if required.
DSPL2		DSPL2 manager/DSPL2 Support worker will triage referrals	DSPL2 support worker will arrange meeting at School with young person, parents/carers and champion from school.			Share progress via PASS.	Weekly contact maintained for 8 weeks.

DSPL2

Delivering Special
Provision Locally

DSPL2 EBSA pilot review



We are pleased to share the positive impact that DSPL2 support has made for the young people involved in the pilot.

As well as feedback from school colleagues, families and young people we have used attendance data and the assessment tool; Pupil Attitude to Self and School scores to evaluate the success of the pilot.

Attendance Averages

- Before Pilot – 58.33%
- Current – 87.52%

PASS

- Attitude to Attendance
Average Score: 22.7
Range of Scores: 2 – 50.8
- Feeling About School
Average Score: 38.32
Range of Scores: 5.1 - 79
- Response to Curriculum Demands
Average Score: 22.88
Range of Scores: 10.3 – 29.7

DSPL2

Delivering Special
Provision Locally

DSPL2 Data Capture



This is the simple data capture spreadsheet which we have sent to all of our schools.

The aim is to collect an accurate and current picture of needs across DSPL2 termly.


When I spoke with Head teachers during the summer term, the feedback about working collaboratively was very positive.

The information from the termly data capture will be used by the DSPL2 team to understand the needs across DSPL2 schools so that we can target and plan support for our schools and our children efficiently and effectively.

If you would like to discuss anything about the data capture, please contact me: n.mansfield@peartreespring.herts.sch.uk

Spring data capture return: 22nd March 2024

Summer data capture return: 5th July 2024

 Termly Data Capture	
Date completed	
Name (completing form)	
Contact Email address	
School Name	
Early years, Primary or Secondary	
Please add numbers for the following categories	Number of CYP
PE (Permanent Exclusion)	
S (Suspension) - categories below	
<i>*S - Episodes of suspension</i>	
<i>S - Number of children</i>	
MM (Managed Move)	
FAP (Fair Access Pupils)	
SP (Special Provision) allocated	
EBSA (Emotionally Based School Absence)	
PTT (Part-time Timetable)	

DSPL2 EHCCo meetings



We are meeting monthly with the EHCCo for DSPL2. If you have any children or young people with SEND needs that you would like updates for or a discussion about need, we can add them to the agenda for these meetings.

We will update you following the meeting.

Next steps, this form will be sent to SENCO's two weeks in advance of these meetings so that our EHCCo has time to prepare for the meeting.



DSPL 2 Manager and link EHCCO Meetings					
Date:					
School Name:					
School Contact and Email:					
Students causing concern					
Student Name	DOB	Main Concerns	Agencies/Services Involved	EHCP	Level of funding
Students at risk of Permanent exclusion					
Student Name	DOB	Main Concerns	Agencies/Services Involved	EHCP	Level of funding
Students currently on a reduced timetable					
Student Name	DOB	Main Concerns - Please state how long the reduced timetable has been in place and how long the child is currently in school	Agencies/Services Involved	EHCP	Level of funding
Students currently not attending at all					
Student Name	DOB	Main Concerns - Please state how long the child has been absent	Agencies/Services Involved	EHCP	Level of funding
SEND Team Queries - Annual reviews, appeals, assessments, provision panel, funding levels					
Student Name	DOB	Main Concerns/Query	Agencies/Services Involved	EHCP	Level of funding

LHNF

Delivering Special
Provision LocallyHertfordshire's
SEND
Local Offer0-25
integration

THE WILLOW CENTRE



The application deadline for the next LHNF panel is Thursday 4 January.

DSPL2 are looking for additional Primary/Secondary colleagues who will attend LHNF panels on Monday 12 February, 9 March, 10 June and 1 July 2024. The meetings will take place via MS Teams and schools receive a £100 payment in return for the time taken to read papers and attend the panel. If you are interested or would like more information, please contact: p.thomas@peartreespring.herts.sch.uk.

DSPL2 Local High Needs Funding Panel Dates 2023-2024

Date	Time	Closing date for applications
18.09.2023	9.30am-12.30pm	04.09.2023
16.10.2023	9.30am-12.30pm	02.10.2023
20.11.2023	9.30am-12.30pm	06.11.2023
15.01.2024	9.30am-12.30pm	04.01.2024
12.02.2024	9.30am-12.30pm	29.01.2024
18.03.2024	9.30am-12.30pm	04.03.2024
09.05.2024*	9.30am-12.30pm	25.04.2024
10.06.2024	9.30am-12.30pm	20.05.2024
01.07.2024	9.30am-12.30pm	17.06.2024

**All on Mondays, except in May*

Please continue to send all LHNF applications to dspl2@peartreespring.herts.sch.uk

We are looking for SENCOs to be involved in the upcoming LHNF panels.

Please contact p.thomas@peartreespring.herts.sch.uk if you would like to register your interest in sitting on any of the panels listed above.

DSPL2 Diary Dates

DSPL2 Board Meeting Dates 2023-2024

Date	Time
17.10.2023	1:30-3.00pm (via Teams)
12.12.2023	1:30-3.00pm
12.03.2024	1:30-3.00pm
14.05.2024	1:30-3.00pm
25.06.2024	1:30-3.00pm

We would like to invite colleagues from schools within DSPL2 to join the DSPL2 board meetings on a rota. If you are interested in being part of a DSPL2 Board Meeting, please contact Penny at p.thomas@peartreespring.herts.sch.uk

DSPL2 Primary/Secondary SENCO Forums 2023/24

Date	Time	Location
Tuesday 30 th January 2024	9.30am-10.30am	<u>Fairlands</u> Primary School
Monday 25 th March 2024	2pm-3pm	The Oak Suite at Peartree Spring Primary School
Monday 20 th May 2024	9.30am-10.30am	St Vincent DePaul
Tuesday 9 th July 2024	2pm-3pm	The Oak Suite at Peartree Spring Primary School

DSPL2 Early Years SENCO Forums 2023/24

All forums will take place in person in the Oak Suite at Peartree Spring Primary School

Date	Time
Tuesday 30 th January 2024 * Early Years Professionals Networking Event	12.30-2.00pm
Monday 25 th March 2024	10am-11am
Thursday 20 th May 2024	1pm-2pm
Tuesday 9 th July 2024	10am-11am

*A networking event for colleagues working in Early Years settings (PVI's, maintained nurseries, nurseries attached to schools). A chance to network with colleagues, charities, organisations and Local Authority professionals. Eventbrite:

<https://www.eventbrite.co.uk/e/dspl2-early-years-professionals-networking-event-tickets-776971672187?aff=oddttdcreator>

DSPL2 Solution Circles

Next Steps: To build on the success of DSPL2 solution circles.

A message from Stevenage ESC:

We are expanding our support to Stevenage secondary schools as part of our collaboration with DSPL 2. To achieve this, we are planning to trial a schools forum based on the current DSPL solution circles. This forum will provide schools with access to various professionals who can offer support and guidance to work towards positive outcomes for young people.

The first forum will take place at Thomas Alleyne Academy on 14/02/2023, from 1:30 to 3:00.

Bookings via Eventbrite



DSPL2
Delivering Special
Provision Locally

DSPL2

Solution Circles



A creative problem solving tool.

Solution circles are tools of "community capacity". It assumes and demonstrates that nearby people- in any community or workplace have the capacity to help- if asked.

Step 1:
Problem presenter outlines the problem.
Step 2:
Brainstorm: everyone shares ideas/creative solutions to what they have just heard.
Step 3:
Group discussion, focusing on five positive points.
Step 4:
The first step. The focus person and the group decide on first steps that are doable in the next 3 days. At least one should be initiated within 24 hours.

It doesn't guarantee a solution but it usually gets people "unstuck" and at least points to a logical next step.

The Plan for 2023-2024


Day: Wednesday
Time: 1.30-3.00pm
Venue: Thomas Alleyne Academy
High Street
Stevenage
SG1 3BE

Cost: Free

Please book on Eventbrite

Date	Time
18.10.23	1:30-3.00pm
13.12.23	1:30-3.00pm
14.02.24	1:30-3.00pm
20.03.24	1:30-3.00pm
15.05.24	1:30-3.00pm


Nichola Mansfield DSPL2 Manager
Donna Hansen DSPL2 Team
Emma Turner DSPL2 Primary Behaviour Service Teacher
Harri Nicholas **NESSie** Lead Coordinator and Arts Therapist
Inclusion Officer
Amy Sawyer Assistant Head, SENCO & Mental Health Lead, Stevenage Education Support Centre
Sian Ford Family Engagement, Mental Health Lead and Designated Senior Person for Child Protection, multi-disciplinary specialism in SEN, SEMH, social care, Mental Health and Health liaison. **Larwood School**
Carol Stevens & Nikki DeFaine SEND Implementation Support Officer, Ask SALI, Early Intervention and Inclusion, Integrated Services for Learning.



DSPL2
Delivering Special
Provision Locally




THE WILLOW CENTRE



NESSie



Hertfordshire



SESC
Stevenage Education
Support Centre



Larwood School



Hertfordshire